





Florida South West Area

Launch Your Vacation Rental Business with Evolve

We've averaged data from managing vacation rentals across North America, plus broader market trends, to help you understand this area's potential.* Let us know how else we can help.



How Does Home Size Affect Performance?

 Number of Bedrooms	 Average Nights Booked	 Amount of Year Booked	 Local Inventory Breakdown
1 Bedroom	91	25%	13%
2 Bedrooms	95	26%	47%
3 Bedrooms	113	31%	28%
4 Bedrooms	146	40%	6%
5 Bedrooms	157	43%	1%

TOP EVOLVE PERFORMER:







4 Bedrooms



227 Nights Booked

How Much Revenue Can You Expect?

 Number of Bedrooms	 Average Daily Rate	 Average Yearly Revenue Top 50%	 Average Yearly Revenue Top 75%
1 Bedroom	\$122	\$13,972	\$31,125
2 Bedrooms	\$126	\$13,257	\$51,939
3 Bedrooms	\$170	\$20,948	\$82,000
4 Bedrooms	\$263	\$44,098	\$121,660
5 Bedrooms	\$503	\$78,775	\$92,730

TOP EVOLVE PERFORMER:



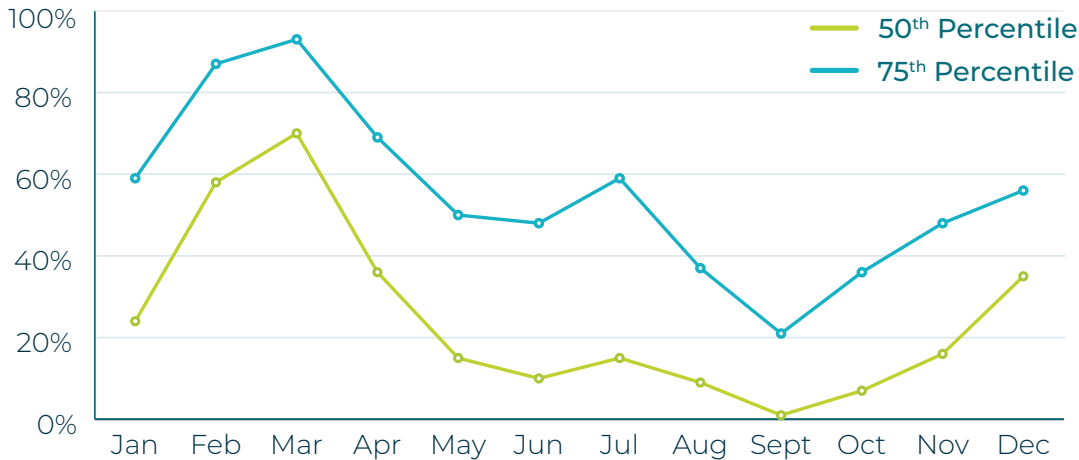
4 Bedrooms



\$362 Average Daily Rate

Occupancy by Month

Amount of month booked throughout the year (high and low season).



Feb, Mar, Apr
High Season



Aug, Sept, Oct
Low Season



**Average Days
Booked in Advance**

96

48

High Season Low Season



**Average Length
of Stay in Days**

6

4

High Season Low Season



**Average Daily
Rate**

\$175

\$112

High Season Low Season

Tools for Investors and Owners

Whether you're just starting out or you're already a rental owner, our website can help.



**New to
Vacation Rental?**

[Learn More >](#)



**Evolve Vacation Rental
Management**

[Learn More >](#)



**Evolve Real
Estate Services**

[Learn More >](#)

* This report is not a guarantee or offer of performance by Evolve. The report is intended to show only an expected range of possible outcomes based on the historical average performance of the market area, is not exclusively based on actual Evolve customer accounts, and does not reflect the effect of future changes in material economic and market factors. This report includes data for Florida South West Area. This info is based on data from 1/1/19 - 12/31/19.

